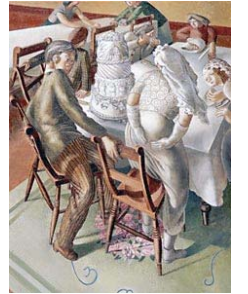


Cobbett's Wey DFAS - Stanley Spencer Gallery & Eton College

Saturday 12th June 2010

Enjoy a visit to Stanley Spencer's Gallery at Cookham with a walking tour of the village followed by a tour of Eton College. Ticket price £25 (44 places available first come first served).



Itinerary for the day

9:15 am The coach departs from the bus stop on Water Lane at 9:15 *promptly* – this is situated just below Sainsbury's Supermarket car park (off Shepherd and Flock roundabout). Free parking has been arranged within the Supermarket car park. **(Please note: NOT the Farnham Hart car park as per previous excursions).**

10.15am Arrive at Cookham Village.



The tour will then be divided into two – the first group will hear a talk on Stanley Spencer in the Gallery and will subsequently be free to wander around to view his paintings. In parallel, the second group will enjoy a walking tour of Cookham village with the history of Spencer's life and upbringing. The two groups will then swap over to experience the other group's programme.

Lunch is of your own preference – there are various eateries and pubs to select from around the village or, weather permitting, you may wish to bring a picnic lunch with you to enjoy alfresco. Please note that the ticket price of £25 does *not* include lunch.

2.15 pm the Coach departs for Eton College.

3.00 pm Tour of the College – School Yard, Lower School, Upper School, College Hall, Chapel and the Museum. Members will again divide into two separate groups.



4.30pm - Questions, visit Eton College Gift Shop.

4.45pm The coach will depart for Farnham, and return us to Sainsbury's Water Lane car park.

5.30pm (approximately) Arrive back to Sainsbury's Supermarket.

It will be a day to remember for its Art, History and English village Site-Seeing.

Please contact Sue Main to secure your place.

N.B. You can pre-book by sending a cheque along with a stamped s.a.e. so that we can return your ticket(s) to you – alternatively please bring your cheque book with you to the next lecture. Sue's telephone number 01252 851008 and Sue's home address is Ewshot Hall Cottage, Heath Lane, Ewshot, near Farnham GU10 5A



The Royal Manor of Cookham was held by the Crown until 1818 and today, although many changes have taken place, the village has made the most of its position and is now one of the most popular Thameside resorts with its many superb restaurants and inns, including Bel and the Dragon dating from 1417 and reputedly one of the oldest licensed houses in England.

The church of the Holy Trinity, although considerably restored, still exhibits parts of its Norman origins as well as many examples of later construction from early English to the late Perpendicular period when the tower was erected. The interior contains many interesting brasses and memorials.